

MECATOME T260

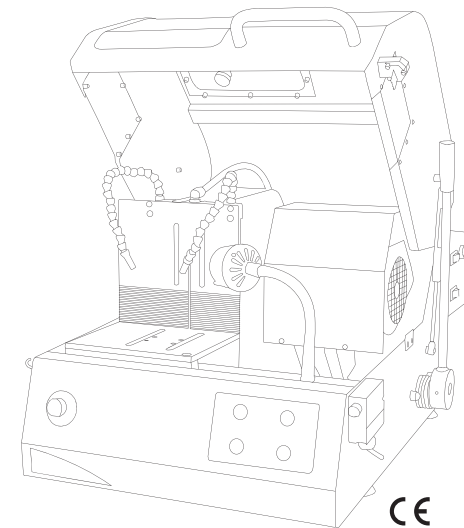
MANUAL CUTTING MACHINE WITH VERTICAL AND HORIZONTAL CLAMPING SYSTEM

Ref. 51200

The MECATOME T260 is a powerful and precise cutting machine designed for sectioning medium sized samples from a wide variety of materials of differing hardness, from the hardest to the softest.

It provides maximum flexibility, with a cutting table which allows clamping of the sample in either the vertical or the horizontal plane. In this way it can adapt to all sample shapes. Can be used with both vice-type clamping systems and KOPAL.

The motor/cutting disc assembly of this machine articulates around 4 bearings, which allows for clean, precise sectioning cuts, and reduces effort for the user at the same time.



CE

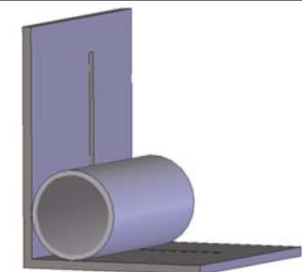
520mm
(closed lid)

820mm

610mm

110kg

CUTTING ENVELOPE*



Ø 95mm

85 x 85mm

120 x 60mm
150 x 25mm

* This illustration of the cutting envelope is to show the maximum theoretical capacity only. The actual capacity may be increased, depending on sample material, cutting frequency and selected flanges.

CHARACTERISTICS

HOOD	
Type	PETG enclosure with metal hinges
Safety	Interlock switch keeps hood locked during cutting
MOTORIZATION - POWER SUPPLY	
Nominal power S1	2200W
Nominal power S3	3200W
Power supply	220V / Single phase / 50Hz
Control of the motor	Frequency inverter
CUT-OFF WHEELS	
Type of cut-off wheels	Resin bonded and metal bonded
Cut-off wheel size range	250 and 300mm
Rotation speed	3.200 or 3.800 RPM, option variable speed 1.000 RPM to 4.000 RPM
Arbor size	25.4mm
CONTROL	
Control Interface	Push buttons
CUTTING	
Cutting modes	Manual
Type of table	Treated steel table in L - 240mm wide
Holders	Vices in horizontal or vertical position-Kopal
LUBRICATION - COOLING	
Pump & tank	External - 25L
Type of lubrication	External recirculating system
Method of directing pumped coolant	2 alignable nozzles
Type of filtration	100µm washable filter cloth
ERGONOMICS	
Internal lighting	LED
Spray nozzle for cleaning	Integrated

ACCESSORIES

STAINLESS STEEL VICES AND HOLDERS



Left quick clamping vice
Height 45mm
Ref. 51213



Right quick clamping vice
Height 45mm
Ref. 51214



Box of Kopal holders
Ref. 50613



Kopal holding
Ref. 50616

TABLES & POSITIONING



Manual traversing additional table.
Left side movement
Ref. 51212

OTHER ACCESSORIES



Base Cabinet
Width 770mm
x depth 880mm
x height 855mm
Ref. 51006



Variable speed option
(1.000 RPM to 4.000 RPM) T260
Ref. 51250



Set of 3 filters
for coolant tank
T260
Ref. 51621

See MECATOME T260 video link

